


TRESPASS®





As one of the UK's most successful outdoor clothing brands, Trespass has been designing and manufacturing outdoor clothing for every adventure for more than 70 years.

Millions of people every year trust Trespass to help them to push their boundaries, reach their goals and explore their passions. With its range of high quality, trusted performance garments and accessories, Trespass delivers on both style and substance.

With a range of promotional and corporate workwear, outdoor wear and high spec technical garments, Trespass is the well-known quality brand in the marketplace that you can trust.

TRESPASS. GO FURTHER®



2-3	TECHNICAL FEATURES
4-31	JACKETS
32-33	KIDS JACKETS
35-37	SOFT SHELLS
38-40	BODYWARMERS
42-47	FLEECE
48-49	TROUSERS
50-51	BAGS
52-53	ACCESSORIES



WATERPROOF, WINDPROOF AND BREATHABLE

Tres-tex® performance fabric is used to produce a range of taped seamed garments.

Supple and durable, functional coatings and surface treatments help repel water and work with the layering systems to draw moisture away from the body.

A hard-shell outer layer is the first defence against wind and rain. Different techniques or combinations may be employed in the construction of the hard-shell outer. Generally a hard-wearing synthetic fabric is backed with coating that does not allow penetration of water, yet allows vapour to pass. Others may be a laminate of fabrics including a membrane. The external facing can also be treated with a Durable Water Repellent treatment. This keeps the external fibres from becoming saturated allowing the transfer of water vapour from the interior to the exterior, a key factor in breathability and the layering strategy as a whole. In addition to the performance of fabric, venting can help immensely.

TAPED SEAMS

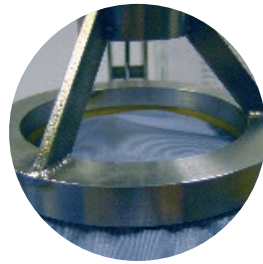
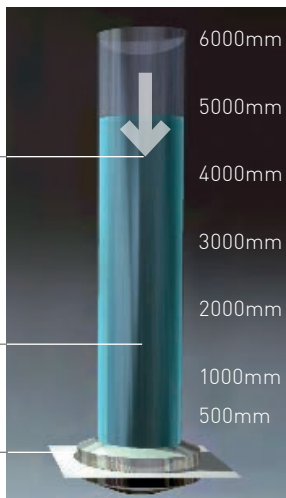
Every seam has needle holes that water can get through. Applying a thermoplastic tape under heat and pressure will seal the seams to keep moisture from passing through.

HOW WE MEASURE WATERPROOFING

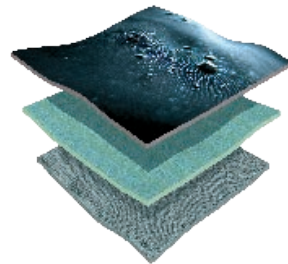
Downward Pressure of Water Column

Minimum Level Classified as Waterproof (1500mm)

Fabric Under Test Resisting 5000mm Water Column



Fabric coatings or laminates can be used to give the best performance across a range of prices. Trespass develop and test a variety of finishes, giving the wearer the breadth of choice when it comes to outdoor clothing.



Outer shell works with layering by retaining body heat while expelling water vapour (sweat).

At the same time wind is prevented from robbing this heat and external moisture (rain) is prevented from passing through.



Tres-tex® waterproof and breathable fabric allows the wearer to stay comfortable and dry.

WARNING this can result in ENJOYMENT of the outdoors in the wettest of weather!



Waterproof, windproof and taped seams, this performance fabric is used to produce a range of great value outerwear. Tres-shield™ does not offer breathability.



Designed specifically to enhance ease of movement, soft shell is a unique and extremely versatile fabric.



The three dimensional structure of down plumules gives the best warmth to weight ratio.

PACKAWAY

Be prepared without sacrificing weight and space in your pack. Packaway garments are lightweight and adjustable with bags of performance.



Three options in one garment. A custom layering system consisting of an outershell and removable fleece or inner jacket offering maximum versatility.



Designed for comfort and warmth from soft, light, breathable, anti-pill fleece, these garments are ultra versatile.



Coldheat® insulation. Lightweight, durable and soft lofted fibres trap and hold the heat generated by your body, allowing you to stay comfortable in the coldest conditions.

DWR

DWR is a Durable Water Repellent treatment applied to some trousers.

QUICKDRY

These special fibres facilitate rapid drying, helping prevent chills due to wet clothing.



Some garments have U.V. fabrics, offering protection from the sun's rays.



TP005
QIKPAC® JACKET
TECHNICAL SPECIFICATION

Unisex shell jacket.
 Adjustable hood.
 Full length contrast zip with internal storm flap.
 Elasticated cuffs.
 Drawcord at hem.
 Packs into drawstring bag.
 Branding on left chest, sleeve, back yoke and right hem.
 Branded woven tab on bottom right side seam.
 Co-ordinates with TP004.

FABRIC COMPOSITION
 100% polyamide PU coating.

FABRIC PROPERTIES
 Tres-tex® fabric is waterproof 5000mm, windproof and breathable 5000mvp.

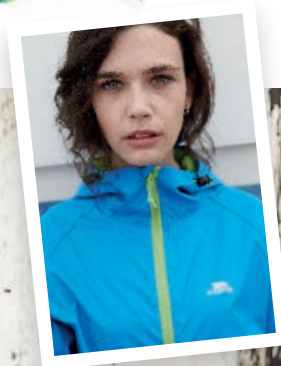
Size: XS S M
Chest (to fit): 33/35 35/37 38/40

Size: L XL XXL
Chest (to fit): 41/43 44/46 46/48



tres-tex
 WATERPROOF & BREATHABLE FABRIC
PACKAWAY

QIKPAC
 HIGH PERFORMANCE
 PACKAWAY





**TP001
CAHONE WATERPROOF
JACKET**

TECHNICAL SPECIFICATION

Adjustable hood.
Drawcord hem.
Reflective branding on back left shoulder.
Co-ordinates with TP002.

FABRIC COMPOSITION
100% polyester 210T with PVC coating.

FABRIC PROPERTIES
Tres-shield™ fabric is waterproof 3000mm and windproof.



black dark navy



Size:	S	M	L
Chest (to fit):	35/37	38/40	41/43
Size:	XL	XXL	3XL
Chest (to fit):	44/46	46/48	48/50



CAHONE

BONCARBO



**TP020
BONCARBO
WATERPROOF
JACKET**

TECHNICAL SPECIFICATION

Concealed adjustable hood.
Full zip with tear release storm flap.
Part elasticated, adjustable cuffs.
Drawcord hem.
Branding on back collar and right sleeve.

FABRIC COMPOSITION
100% brushed polyester with PVC coating.
Mesh lined body and polyester lined sleeves.

FABRIC PROPERTIES
Tres-shield™ fabric is waterproof 3000mm and windproof.



Size:	S	M	L
Chest (to fit):	35/37	38/40	41/43
Size:	XL	XXL	3XL
Chest (to fit):	44/46	46/48	48/50



black dark navy



khaki red



**TP029
LADIES MIYAKE JACKET**

TECHNICAL SPECIFICATION

Adjustable hood.
Collar high full length zip with outer tear release storm flap.
Drawcord at hem with side adjustment.
Adjustable cuffs.
Branding on left chest, hem and right cuff.

FABRIC COMPOSITION

100% polyamide outer with PU coating.
Mesh lined body and polyester lined sleeves.

FABRIC PROPERTIES

Tres-tex® fabric is waterproof 5000mm, windproof and breathable 5000mvp.

tres-tex
WATERPROOF & BREATHABLE FABRIC



black

harbour



hibiscus

sangria

Ladies size: 8 10 12 14 16 18
Chest (to fit): 32 34 36 38 40 42



**TP028
CORVO JACKET**

TECHNICAL SPECIFICATION

Adjustable hood.
Collar high full length zip with outer tear release storm flap.
Drawcord at hem with side adjustment.
Adjustable cuffs.
Branding on left chest, hem and right cuff.

FABRIC COMPOSITION

100% polyamide outer with PU coating.
Mesh lined body and polyester lined sleeves.

FABRIC PROPERTIES

Tres-tex® fabric is waterproof 5000mm, windproof and breathable 5000mvp.

tres-tex
WATERPROOF & BREATHABLE FABRIC

Size: S M L XL XXL
Chest (to fit): 35/37 38/40 41/43 44/46 46/48



black

red



cobalt

cactus green





**TP100
OSWALT DLX JACKET**

TECHNICAL SPECIFICATION
Adjustable zip off hood.
Underarm ventilation zips.
Contrast zip pulls.
Adjustable cuffs.
Branding on left chest, back yoke and both arms.

FABRIC COMPOSITION
100% polyester TPU membrane.
Polyester mesh lined body and sleeves.

FABRIC PROPERTIES
Tres-tex® fabric is waterproof 20,000mm,
windproof and breathable 10,000mvp.

Size: S M L XL XXL
Chest (to fit): 35/37 38/40 41/43 44/46 46/48



tres-tex
WATERPROOF & BREATHABLE FABRIC



TP021
AULT WATERPROOF JACKET

TECHNICAL SPECIFICATION
Full zip with tear release storm flap.
Concealed adjustable hood.
Part elasticated, adjustable cuffs.
Drawcord hem.
Branding on back collar and right sleeve.

FABRIC COMPOSITION
100% brushed polyester outer with PU coating.
Mesh lined body and polyester lined sleeves.

FABRIC PROPERTIES
Tres-tex® fabric is waterproof 3000mm, windproof and breathable 3000mvp.

tres-tex
WATERPROOF & BREATHABLE FABRIC

Size:	S	M	L
Chest (to fit):	35/37	38/40	41/43
Size:	XL	XXL	3XL
Chest (to fit):	44/46	46/48	48/50



**TP022
KITTRIDGE
WATERPROOF JACKET**

TECHNICAL SPECIFICATION
Concealed adjustable hood.
Full zip with tear release storm flap.
Part elasticated adjustable cuffs.
Drawcord at waist and hem.
Branding on back collar and right sleeve.

FABRIC COMPOSITION
100% brushed polyester outer with PU coating.
Mesh lined body and polyester lined sleeves.

FABRIC PROPERTIES
Tres-tex® fabric is waterproof 3000mm, windproof and breathable 3000mvp.

Size: S M L
Chest (to fit): 35/37 38/40 41/43
Size: XL XXL 3XL
Chest (to fit): 44/46 46/48 48/50

tres-tex®
WATERPROOF & BREATHABLE FABRIC



black dark navy



LAIRD

**TP042
LAIRD WATERPROOF
JACKET**

TECHNICAL SPECIFICATION
Corduroy lined collar.
Full length zip with stud closing storm flap and chin guard.
Drawcord hem.
Branding on front pocket flap and back left shoulder.

FABRIC COMPOSITION
100% polyester microfibre with PU coating.
Polyester lining.

FABRIC PROPERTIES
Tres-shield™ fabric is waterproof 2000mm and windproof.
Coldheat® insulation.



black olive

COLDHEAT®
COLD RESISTANT INSULATION TECHNOLOGY

TRES-SHIELD
WATERPROOF & WINDPROOF FABRIC

Size: XS S M
Chest (to fit): 33/35 35/37 38/40
Size: L XL XXL
Chest (to fit): 41/43 44/46 46/48
Size: 3XL
Chest (to fit): 48/50





**TP043
BLANCA WATERPROOF
JACKET**

TECHNICAL SPECIFICATION
Concealed, lined adjustable hood.
Collar high full length zip with tear
release storm flap.
Part elasticated, adjustable cuffs.
Adjustable drawcord at waist
and hem.

Branding on back collar, right
sleeve and side seam.

FABRIC COMPOSITION
100% brushed polyester outer
with PVC coating.
Quilted polyester lining.

FABRIC PROPERTIES
Tres-shield™ fabric is waterproof
3000mm and windproof.
Coldheat® insulation.



black dark navy



khaki red



Size:	S	M
Chest (to fit):	35/37	38/40
Size:	L	XL
Chest (to fit):	41/43	44/46
Size:	XXL	3XL
Chest (to fit):	46/48	48/50

BLANCA

SAN FRAN



**TP059
LADIES SAN FRAN JACKET**
TECHNICAL SPECIFICATION
Padded, longer length design.
Zip off hood with removable faux fur trim.
Collar high full length front zip with tear
release storm flap.
Adjustable cuffs.
Branding on left chest.
FABRIC COMPOSITION
100% polyester microfibre outer with PVC
coating.
Patterned polyester lining.
FABRIC PROPERTIES
Tres-shield™ fabric is waterproof 5000mm
and windproof.
Coldheat® insulation.



black grape



Ladies size:	8	10	12	14	16	18
Chest (to fit):	32	34	36	38	40	42



MIDWEIGHT JACKETS



TRESPASS. GO FURTHER®

MIDWEIGHT JACKETS



TP058 LADIES EVERYDAY JACKET

TECHNICAL SPECIFICATION

Adjustable zip off hood with removable faux fur trim.
Collar high full length zip with inner storm flap and chin guard.
Adjustable waist tabs.
Two front zip pockets.
Inner knitted cuff.
Drawcord at hem.
Branding on front left pocket.

FABRIC COMPOSITION

100% polyester with TPU membrane.
Polyester lining.

FABRIC PROPERTIES

Tres-shield™ fabric is waterproof 3000mm and windproof.
Coldheat® insulation.



khaki

navy



Ladies size: 8 10 12 14 16 18
Chest (to fit): 32 34 36 38 40 42

TP057 ORAN JACKET

TECHNICAL SPECIFICATION

Adjustable zip off hood with removable faux fur trim.
Collar high full length front zip with tear release storm flap.
Chin guard.
Two front pockets with flap and stud fastening.
Part elasticated adjustable cuffs.
Drawcord at hem.
Branded tab on left chest.

FABRIC COMPOSITION

100% polyester with TPU membrane.
Contrast polyester lining.

FABRIC PROPERTIES

Tres-shield™ fabric is waterproof 3000mm and windproof.
Coldheat® insulation.



khaki

navy



Size: S M L XL XXL
Chest (to fit): 35/37 38/40 41/43 44/46 46/48

TRESPASS. GO FURTHER®

MIDWEIGHT JACKETS



TP052 REWAX JACKET

TECHNICAL SPECIFICATION

Corduroy lined collar.
Full length zip with studded storm flap.
Quilted stitch detail to shoulders and chest pocket flaps.
Antique brass trimmings.
Stud fastened adjustable cuffs.
Branding on front left pocket and studs.

FABRIC COMPOSITION

100% cotton outer.
Upper body has check cotton flannel lining.
Lower body has quilted polyester lining.
Polyester lined sleeves.

FABRIC PROPERTIES

Waxed effect finish.
Coldheat® insulation.



black

Size: XS S M
Chest (to fit): 33/35 35/37 38/40
Size: L XL XXL
Chest (to fit): 41/43 44/46 46/48

MIDWEIGHT JACKETS

TP044

ELK WATERPROOF JACKET

TECHNICAL SPECIFICATION

Concealed, lined adjustable hood.
Collar high full length zip with tear release storm flap and chin guard.
Two front tear release fastened bellows pockets.
Adjustable drawcord at waist and hem.
Part elasticated, adjustable cuffs.
Branding on back collar, right sleeve and side seam.

FABRIC COMPOSITION

100% brushed polyester outer with PU coating.
Polyester quilted lining.

FABRIC PROPERTIES

Tres-tex® fabric is waterproof 3000mm, windproof and breathable 3000mvp.
Coldheat® insulation.



black



dark navy



Size: S M L
Chest (to fit): 35/37 38/40 41/43
Size: XL XXL 3XL
Chest (to fit): 44/46 46/48 48/50



ELK



**TP056
LADIES OLLO DOWN JACKET**

TECHNICAL SPECIFICATION

Diamond baffle stitch detail.
Collar high full length zip with self fabric chin guard.
Two concealed front zip pockets.
Binding on cuffs and hem.
Thumbhole detail in cuffs.
Printed back neck label.
Branding on bottom left hem.

FABRIC COMPOSITION

Polyamide outer with 80% down and 20% feather padding.
Polyamide downproof lining.



black



azalea



Ladies size: 8 10 12 14 16 18
Chest (to fit): 32 34 36 38 40 42



TP055

ZAKY DOWN JACKET

TECHNICAL SPECIFICATION

Collar high full length zip with self fabric chin guard.
Two concealed front zip pockets.
One concealed pocket on left sleeve.
Thumbhole detail in cuffs.
Printed back neck label.
Branding on left chest.

FABRIC COMPOSITION

Polyamide outer with 80% down and 20% feather padding.
Polyamide downproof lining.



Black



Size: S M L XL XXL
Chest (to fit): 35/37 38/40 41/43 44/46 46/48



TP041 LADIES BAYFIELD
WATERPROOF JACKET p26

TP040 BAYFIELD
WATERPROOF JACKET p27

MIDWEIGHT JACKETS



TP054
CLIP PADDED JACKET

TECHNICAL SPECIFICATION

Adjustable zip off hood.
Full length zip with chin guard.
Elasticated cuffs.
Drawcord hem.
Branding on left chest.

FABRIC COMPOSITION

100% polyester.
Padded polyester lining.

FABRIC PROPERTIES

Coldheat® insulation.



Size: S M L XL XXL
Chest (to fit): 35/37 38/40 41/43 44/46 46/48



black

flint

navy

**TP041
LADIES BAYFIELD
WATERPROOF JACKET**

TECHNICAL SPECIFICATION

Collar high full length zip with tear release storm flap.
Shaped fit.
Concealed, lined adjustable hood.
Inner pocket.
Part elasticated, adjustable cuffs.
Adjustable drawcord hem.
Branding on back collar, right sleeve and side seam.

FABRIC COMPOSITION

100% brushed polyester outer with PVC coating.
Polyester lining.

FABRIC PROPERTIES

Tres-shield™ fabric is waterproof 3000mm and windproof.
Coldheat® insulation.



black



dark navy



khaki



red

TRES-SHIELD
WATERPROOF & WINDPROOF FABRIC

COLDHEAT
INSULATION

Ladies size: 10 12 14 16 18 20

Chest (to fit): 34 36 38 40 42 44



**TP040
BAYFIELD WATERPROOF JACKET**

TECHNICAL SPECIFICATION

Concealed, lined adjustable hood.
Part elasticated, adjustable cuffs.
Adjustable drawcord hem.
Branding on back collar, right sleeve and side seam.

FABRIC COMPOSITION

100% brushed polyester outer with PVC coating.
Polyester lining.

FABRIC PROPERTIES

Tres-shield™ fabric is waterproof 3000mm and windproof.
Coldheat® insulation.

TRES-SHIELD
WATERPROOF & WINDPROOF FABRIC

COLDHEAT
INSULATION



black



dark navy



khaki



red

Size: S M L

Chest (to fit): 35/37 38/40 41/43

Size: XL XXL 3XL

Chest (to fit): 44/46 46/48 48/50





**TP060
ALAMOSA 3-IN-1 JACKET**

TECHNICAL SPECIFICATION

Concealed, lined adjustable hood.
Collar high full length zip with tear release storm flap and chin guard.
Part elasticated, adjustable cuffs.
Adjustable drawcord waist and hem.
Branding on back collar and right sleeve on outer fleece.

FABRIC COMPOSITION

100% brushed polyester outer with PVC coating.
Part mesh, part polyester lining.
Removable 220gsm anti-pill polyester fleece inner.

FABRIC PROPERTIES

Tres-shield™ fabric is waterproof 3000mm and windproof.



Size:	S	M	L
Chest (to fit):	35/37	38/40	41/43
Size:	XL	XXL	3XL
Chest (to fit):	44/46	46/48	48/50



**TP061
LADIES ALAMOSA 3-IN-1 JACKET**

TECHNICAL SPECIFICATION

Shaped fit.
Concealed, lined adjustable hood.
Collar high full length zip with tear release storm flap and chin guard.
Part elasticated, adjustable cuffs.
Adjustable drawcord waist and hem.
Branding on back collar and right sleeve on outer fleece.

FABRIC COMPOSITION

100% brushed polyester outer with PVC coating.
Part mesh, part polyester lining.
Removable 220 gsm anti-pill polyester fleece inner.

FABRIC PROPERTIES

Tres-shield™ fabric is waterproof 3000mm and windproof.



Ladies size:	10	12	14	16	18	20
Chest (to fit):	34	36	38	40	42	44



**TP051
LADIES COCOON JACKET**

TECHNICAL SPECIFICATION

Shaped fit.
Detachable, adjustable hood.
Scrim lined collar with earphone loop.
Collar high water repellent front zip with inner storm flap and chin guard.
Inner zip pocket with earphone access.
Adjustable cuffs with inner knitted cuff.
Adjustable drawcord hem.
Reflective branding on lower left hem and back left shoulder.

FABRIC COMPOSITION

Polyamide outer with PU coating.
Polyester downproof lining with 50% down and 50% feather padding.



black white



Ladies size: 8 10 12 14 16 18
Chest (to fit): 32 34 36 38 40 42



**TP050
IGLOO JACKET**

TECHNICAL SPECIFICATION

Detachable, adjustable hood.
Scrim lined collar with earphone loop.
Collar high water repellent front zip with inner storm flap and chin guard.
Inner zip pocket with earphone access.
Inner mesh pocket.
Adjustable cuffs with inner knitted cuff.
Adjustable drawcord hem.
Reflective branding on lower left hem, back right shoulder and left arm.

FABRIC COMPOSITION

Polyamide outer with PU coating.
Polyester downproof lining with 50% down and 50% feather padding.



black signal red cobalt



Size: XS S M
Chest (to fit): 33/35 35/37 38/40
Size: L XL XXL
Chest (to fit): 41/43 44/46 46/48



**TP221
KIDS TUFF PADDED
JACKET**

TECHNICAL SPECIFICATION
Adjustable zip off hood.
Elasticated cuffs.
Drawcord hem.
Branding on left chest.
FABRIC COMPOSITION
100% polyester.
Padded polyester lining.
FABRIC PROPERTIES
Coldheat® insulation.



black



flint



ultramarine



COLDHEAT
COLDHEAT® INSULATION

Age:	2-3	3-4	5-6
Height (cm):	92-98	98-104	110-116
Chest (to fit):	21	22	24
Age:	7-8	9-10	11-12
Height (cm):	112-128	134-140	146-152
Chest (to fit):	26	28	31



**TP220
KIDS CORNELL JACKET**

TECHNICAL SPECIFICATION
Padded design.
Adjustable removable hood with stud fastening.
Part elasticated, adjustable cuffs.
Drawcord hem with side adjusters.
Reflective piping.
Reflective print on back hem.
Branding on left chest and left sleeve.
FABRIC COMPOSITION
100% polyester with microfibre PU coating.
Polyester lining.
FABRIC PROPERTIES
Tres-shield™ fabric is waterproof 5000mm and windproof.
Coldheat® insulation.



black



flint



navy



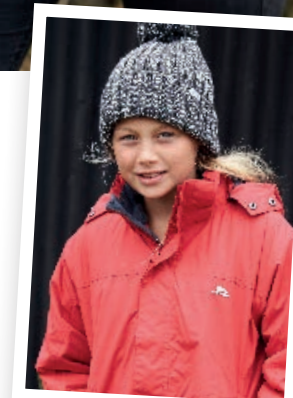
pansy



red



wildberry



TRES-SHIELD
WATERPROOF & WINDPROOF FABRIC

COLDHEAT
COLDHEAT® INSULATION

Age:	2-3	3-4	5-6	7-8
Height (cm):	92-98	98-104	110-116	112-128
Chest (to fit):	21	22	24	26
Age:	9-10	11-12	13-14	15-16
Height (cm):	134-140	146-152	158-164	170-176
Chest (to fit):	28	31	33	34

TP028 CORVO JACKET p9

TP029 LADIES MIYAKE JACKET p8



SOFT SHELL



TP082 ACCELERATOR SOFT SHELL JACKET

TECHNICAL SPECIFICATION

Adjustable zip off hood.
Adjustable cuffs.
Drawcord at hem.
Branding on left chest, back neck
and zip pulls.

FABRIC COMPOSITION

94% polyester/ 6% elastane outer.
Tres-tex® membrane.

FABRIC PROPERTIES

Tres-tex® fabric is waterproof 8000mm
and breathable 3000mvp.



black

dark navy

flint

tres-tex

softshell
TRESPASS MOTION FABRICS

Size: S M L XL XXL
Chest (to fit): 35/37 38/40 41/43 44/46 46/48



SOFT SHELL

TP080

AKRON SOFTSHELL JACKET

TECHNICAL SPECIFICATION

Adjustable drawcord hem.
Branded zip pulls.

FABRIC COMPOSITION

94% polyester/6% elastane, fleece backed softshell.

FABRIC PROPERTIES

Lightweight, water repellent and wind resistant.



black

dark navy

red

electric blue

Size:	S	M	L
Chest (to fit):	35/37	38/40	41/43
Size:	XL	XXL	3XL
Chest (to fit):	44/46	46/48	48/50

softshell
TRESPASS MOTION FABRICS

AKRON





**TP122
MALLROY BODYWARMER**

TECHNICAL SPECIFICATION

Quilted stitching.
Branding on left chest, back right shoulder and hem.

FABRIC COMPOSITION

100% polyamide outer with 80% down and 20% feather padding.
Polyamide downproof lining.

Size: S M L XL XXL
Chest (to fit): 35/37 38/40 41/43 44/46 46/48



black navy thyme



MALLROY

**TP123
LADIES CORRINA
BODYWARMER**

TECHNICAL SPECIFICATION

Shaped fit.
Quilted stitching.
Matching binding at armholes.
Branding on left chest, back right shoulder and hem.

FABRIC COMPOSITION

100% polyamide outer with 80% down and 20% feather padding.
Polyamide downproof lining.

Ladies size: 8 10 12 14 16 18
Chest (to fit): 32 34 36 38 40 42



black airforce



BODYWARMERS

TP121 BRIGGSDALE BODYWARMER

Size: S M L
Chest (to fit): 35/37 38/40 41/43
Size: XL XXL 3XL
Chest (to fit): 44/46 46/48 48/50

TECHNICAL SPECIFICATION
Quilted stitching.
Two welt pockets.
Drawcord at hem.
Branding on back collar.

FABRIC COMPOSITION
100% polyamide tafetta
outer with AC coating.
Polyester lining.

FABRIC PROPERTIES
Coldheat® insulation.



TP120 RISEN BODYWARMER

TECHNICAL SPECIFICATION
Two chest tear release fastened
patch pockets.
Adjustable drawcord at hem.
Branding on back left shoulder.
Access for decoration.

FABRIC COMPOSITION
65% polyester/35% cotton twill outer.
Polyester lining.

FABRIC PROPERTIES
Water repellent.
Coldheat® insulation.



Size: S M L
Chest (to fit): 35/37 38/40 41/43
Size: XL XXL 3XL
Chest (to fit): 44/46 46/48 48/50



TP123 LADIES CORRINA
BODYWARMER p39

TP122 MALLROY
BODYWARMER p38

FLEECE



FLEECE



**TP150
STRENGTH FLEECE JACKET**

TECHNICAL SPECIFICATION

Fleece cuffs.
Open hem with adjustable drawcord.
Branding on back of collar and right sleeve.

FABRIC COMPOSITION

100% polyester anti-pill Airtrap® fleece.
Unlined.

FABRIC PROPERTIES

Weight: 280 gsm



black dark navy khaki red



royal storm green wine

Size: S M L
Chest (to fit): 35/37 38/40 41/43
Size: XL XXL 3XL
Chest (to fit): 44/46 46/48 48/50

**TP151
LADIES STRENGTH FLEECE JACKET**

TECHNICAL SPECIFICATION

Shaped fit.
Fleece cuffs.
Open hem with adjustable drawcord.
Branding on back of collar and right sleeve.

FABRIC COMPOSITION

100% polyester anti-pill Airtrap® fleece.
Unlined.

FABRIC PROPERTIES

Weight: 280 gsm



black dark navy khaki red



royal storm green wine

Ladies size: 10 12 14 16 18 20
Chest (to fit): 34 36 38 40 42 44

FLEECE



**TP156
LADIES BOYERO FLEECE
JACKET**

TECHNICAL SPECIFICATION

Shaped fit.
Fleece cuffs.
Open hem with adjustable drawcord.
Branding on back of collar, right sleeve
and right side seam.

FABRIC COMPOSITION
100% polyester anti-pill Airtrap® fleece.
Unlined.

FABRIC PROPERTIES
Weight: 220 gsm

Ladies size: 10 12 14 16 18 20
Chest (to fit): 34 36 38 40 42 44



FLEECE



**TP155
BOYERO FLEECE JACKET**

TECHNICAL SPECIFICATION

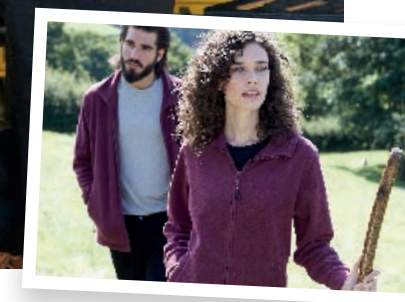
Fleece cuffs.
Open hem with adjustable drawcord.
Branding on back of collar, right sleeve
and right side seam.

FABRIC COMPOSITION
100% polyester anti-pill Airtrap® fleece.
Unlined.

FABRIC PROPERTIES
Weight: 220 gsm



Size:	S	M	L
Chest (to fit):	35/37	38/40	41/43
Size:	XL	XXL	3XL
Chest (to fit):	44/46	46/48	48/50



FLEECE



**TP160
UNISEX DUTY ZIP
NECK MICRO FLEECE**

TECHNICAL SPECIFICATION

Lightweight.
Fleece cuffs.
Open hem.
Branding on left sleeve and right side seam.

FABRIC COMPOSITION

100% polyester anti-pill
Airtrap® micro fleece.
Unlined.

FABRIC PROPERTIES

Weight: 130 gsm



Size: XXS XS S M
Chest (to fit): 31/33 33/35 35/37 38/40
Size: L XL XXL
Chest (to fit): 41/43 44/46 46/48



FLEECE



**TP162
LADIES KATNISS FLEECE
HOODIE**

TECHNICAL SPECIFICATION

Crossover hood with drawcord.
Front pouch pocket.
Open hem.
Branding to lower left hem, left sleeve and left side seam.

FABRIC COMPOSITION

100% polyester anti-pill Airtrap® fleece.

FABRIC PROPERTIES

Weight: 210 gsm



dark jade marl navy marl grape wine marl



Ladies size: 8 10 12 14 16 18
Chest (to fit): 32 34 36 38 40 42

TROUSERS



TP002
CARBONDALE WATERPROOF
OVERTROUSERS

TECHNICAL SPECIFICATION

Elasticated waistband.
Hem stud adjusters.
Reflective branding on left leg hem.
Co-ordinates with TP001.

FABRIC COMPOSITION

100% polyester 210T with PVC coating.

FABRIC PROPERTIES

Tres-shield™ fabric is waterproof
3000mm and windproof.
Taped seams.



black dark navy



Size:	S	M	L
Waist (to fit):	30/32	33/35	36/38
Inside leg:	30	30.5	31
Size:	XL	XXL	3XL
Waist (to fit):	39/41	41/43	43/45
Inside leg:	31.5	32	32.5

TP004
QIKPAC® PACKAWAY
WATERPROOF OVERTROUSERS

TECHNICAL SPECIFICATION

Elasticated waistband.
Two side pocket openings and one rear pocket opening.
Hem stud adjusters.
Packs into drawstring bag.
Co-ordinates with TP005.

FABRIC COMPOSITION

100% polyamide 210T with PU coating.

FABRIC PROPERTIES

Tres-tex® fabric is waterproof 5000mm,
windproof and breathable 5000mvp.
Taped seams.



black dark navy flint



Size:	XS	S	M
Waist (to fit):	28/30	30/32	33/35
Inside leg:	29.5	30	30.5
Size:	L	XL	XXL
Waist (to fit):	36/38	39/41	41/43
Inside leg:	31	31.5	32

TROUSERS



TP301
CLIFTON TROUSERS

TECHNICAL SPECIFICATION

Zip fly with button over.
Branded belt.
Part elasticated waist with side adjusters, belt loops and belt.
Reinforced knees and seat.
Five zipped pockets, including two rear, two side and one leg.
One patch pocket on right leg.
Branding on left front pocket, right thigh pocket and below back waistband.

FABRIC COMPOSITION

65% polyester/35% cotton.

FABRIC PROPERTIES

Protects against UV 40+ rays.
Durable Water Repellent finish.
Quick drying.



khaki



Size:	XS	S	M
Waist (to fit):	28/30	30/32	33/35
Size:	L	XL	XXL
Waist (to fit):	36/38	39/41	41/43
Leg length:	Short	Reg	Long
Inside Leg:	29	31	33

TP302
DUMONT TROUSERS

TECHNICAL SPECIFICATION

Zip fly with button over.
Branded belt.
Part elasticated waist with side adjusters, belt loops and belt.
Reinforced knees and seat.
Five zipped pockets, including two rear, two side and one leg.
Branding on left front pocket, right thigh pocket and below back waistband.

FABRIC COMPOSITION

65% polyester/35% cotton.

FABRIC PROPERTIES

Protects against UV 40+ rays.
Durable Water Repellent finish.
Quick drying.



black



Size:	XS	S	M
Waist (to fit):	28/30	30/32	33/35
Size:	L	XL	XXL
Waist (to fit):	36/38	39/41	41/43
Inside leg:	31		

BAGS



**TP400
TREK 33 RUCKSACK**
TECHNICAL SPECIFICATION
 Supportive back system and padded hip belt.
 Padded shoulder straps.
 Compression straps.
 Two side zip pockets.
 Front pouch pocket.
 Raincover included.
 Trekking pole attachment points.
 Capacity 33 litres.
 Branding to front and on back strap.
 Co-ordinates with TP401.

FABRIC COMPOSITION
 600D polyester ripstop.
Dimensions: 64 x 42 x 30 cm



red mallard wildberry black

**TP401
TREK 66 RUCKSACK**
TECHNICAL SPECIFICATION
 Supportive back system and padded hip belt.
 Padded shoulder straps.
 Compression straps.
 Two side zip pockets.
 Front pouch pocket.
 Raincover included.
 Trekking pole attachment points.
 Capacity 66 litres.
 Branding to front and on back strap.
 Co-ordinates with TP400.

FABRIC COMPOSITION
 600D polyester ripstop.
Dimensions: 80 x 42 x 30 cm



red mallard wildberry black

BAGS



**TP402
BLACKFRIAR DUFFLE BAG**
TECHNICAL SPECIFICATION
 Padded shoulder strap.
 Zipped main compartment.
 Internal zipped mesh pocket.
 Address label.
 Capacity 60 litres.
 Branding to sides and carry handles.
FABRIC COMPOSITION
 500D tarpaulin /PVC.
FABRIC PROPERTIES
 Waterproof.
Dimensions: 58 x 36 x 36 cm



**TP403
PULLY TROLLEY BAG**
TECHNICAL SPECIFICATION
 Padded detachable shoulder strap.
 Padded handle at top and side.
 One main zip compartment with zip flap.
 Three outer zip pockets.
 Two roller wheels.
 Branding to sides and carry handle.
 Capacity 80 litres.
FABRIC COMPOSITION
 600D PVC.
Dimensions: 70 x 35 x 40 cm

**TP404
JETSET CABIN BAG**
TECHNICAL SPECIFICATION
 Aircraft cabin compatible.
 Two carry handles.
 Retractable aluminium handle.
 Two front zip pockets.
 Back document pocket with zip fastening.
 Luggage tag and an integrated combination lock.
 Two wheels and two front feet at base.
 Capacity 40 litres.
 Branding to top and side straps and front zip pocket.
FABRIC COMPOSITION
 1200D PVC coated polyester.
Dimensions: 54 x 22 x 35 cm



ACCESSORIES



black graphite

TP254 TOGGED THERMAL SOCKS

TECHNICAL SPECIFICATION
Elasticated rib top.
Ribbed construction.

FABRIC COMPOSITION
91% acrylic/5% nylon/3% polyester/1% elastane.

FABRIC PROPERTIES
Thermal knit.
Three tog rating.

Size (fits): 4-7 7-11



kingfisher pansy

TP255 LADIES FUZZ THERMAL SOCKS

TECHNICAL SPECIFICATION
Elasticated rib top.
Ribbed construction.

FABRIC COMPOSITION
91% acrylic/5% nylon/3% polyester/1% elastane.

FABRIC PROPERTIES
Thermal knit.
Three tog rating.

Size (fits): 3-6 6-9



navy

TP250 SLICED WINTER SOCKS

TECHNICAL SPECIFICATION
Elasticated rib top.
Ribbed construction.
Assorted colours, grey, black and navy.
Sold as a pack of 3.

FABRIC COMPOSITION
80% acrylic/20% polyester.

FABRIC PROPERTIES
Durable warm knit.

Size (fits): 4-7 7-11



stone dewberry sky blue

TP251 LADIES ALERT WINTER SOCKS

TECHNICAL SPECIFICATION
Elasticated rib top.
Ribbed construction.
Assorted colours, dewberry, sky blue and stone.
Sold as a pack of 3.

FABRIC COMPOSITION
80% acrylic/20% polyester.

FABRIC PROPERTIES
Durable warm knit.

Size (fits): 3-6 6-9



grey/black marl black marl/grey

TP252 HITCHED BOOT SOCKS

TECHNICAL SPECIFICATION
Arch and heel support.
Elasticated rib top.
Ribbed construction.
Assorted colours, black/grey marl and grey/black marl.
Sold as a pack of 2.

FABRIC COMPOSITION
74% cotton/16% acrylic/9% polyamide/1% elastane.
Tactel® lining.

FABRIC PROPERTIES
Durable warm knit.
Anti blister.

Size (fits): 4-7 7-11



oatmeal grape wine

TP253 LADIES HADLEY BOOT SOCKS

TECHNICAL SPECIFICATION
Elasticated rib top.
Ribbed construction.
Assorted colours, grape wine and oatmeal.
Sold as a pack of 2.

FABRIC COMPOSITION
74% cotton/16% acrylic/9% polyamide/1% elastane.
Tactel® lining.

FABRIC PROPERTIES
Anti blister.
Durable warm knit.

Size (fits): 3-6 6-9

ACCESSORIES



TP310 FLEX360 LONG SLEEVE THERMAL TOP

TECHNICAL SPECIFICATION
Crew neck.
Flat seams for comfort.
Deep cuffs.
Side vents.
Co-ordinates with TP311.

FABRIC COMPOSITION
100% polyester.

FABRIC PROPERTIES
Weight: 170 gsm
Quick drying.
Wicking fabric allowing you to stay cool and dry.

QUICKDRY

Size: XS S M
Chest (to fit): 33/35 35/37 38/40
Size: L XL XXL
Chest (to fit): 41/43 44/46 46/48



black



TP311 YOMP360 THERMAL PANTS

TECHNICAL SPECIFICATION
Elasticated waist.
Flat seams for comfort.
Deep cuff leg ends.
Co-ordinates with TP310.

FABRIC COMPOSITION
100% polyester.

FABRIC PROPERTIES
Weight: 170 gsm
Quick drying.
Wicking fabric allowing you to stay cool and dry.

QUICKDRY

Size: XS S M
Waist (to fit): 28/30 30/32 33/35
Size: L XL XXL
Waist (to fit): 36/38 39/41 41/43

Leg Length: Reg 31



black



TP312 UNITE360 LONG SLEEVE THERMAL SET

TECHNICAL SPECIFICATION
1/2 zip neck top.
Deep cuffs.
Side vents.
Bottoms have elasticated waist.
Flat seams for comfort.
Deep cuffed leg ends.

FABRIC COMPOSITION
100% polyester.

FABRIC PROPERTIES
Weight: 170 gsm
Quick drying.
Wicking fabric allowing you to stay cool and dry.

QUICKDRY

Size: XS S M
Chest (to fit): 33/35 35/37 38/40
Waist (to fit): 28/30 30/32 33/35

Size: L XL XXL
Chest (to fit): 41/43 44/46 46/48
Waist (to fit): 36/38 39/41 41/43



black

TRESPASS. GO FURTHER®



www.trespas.com